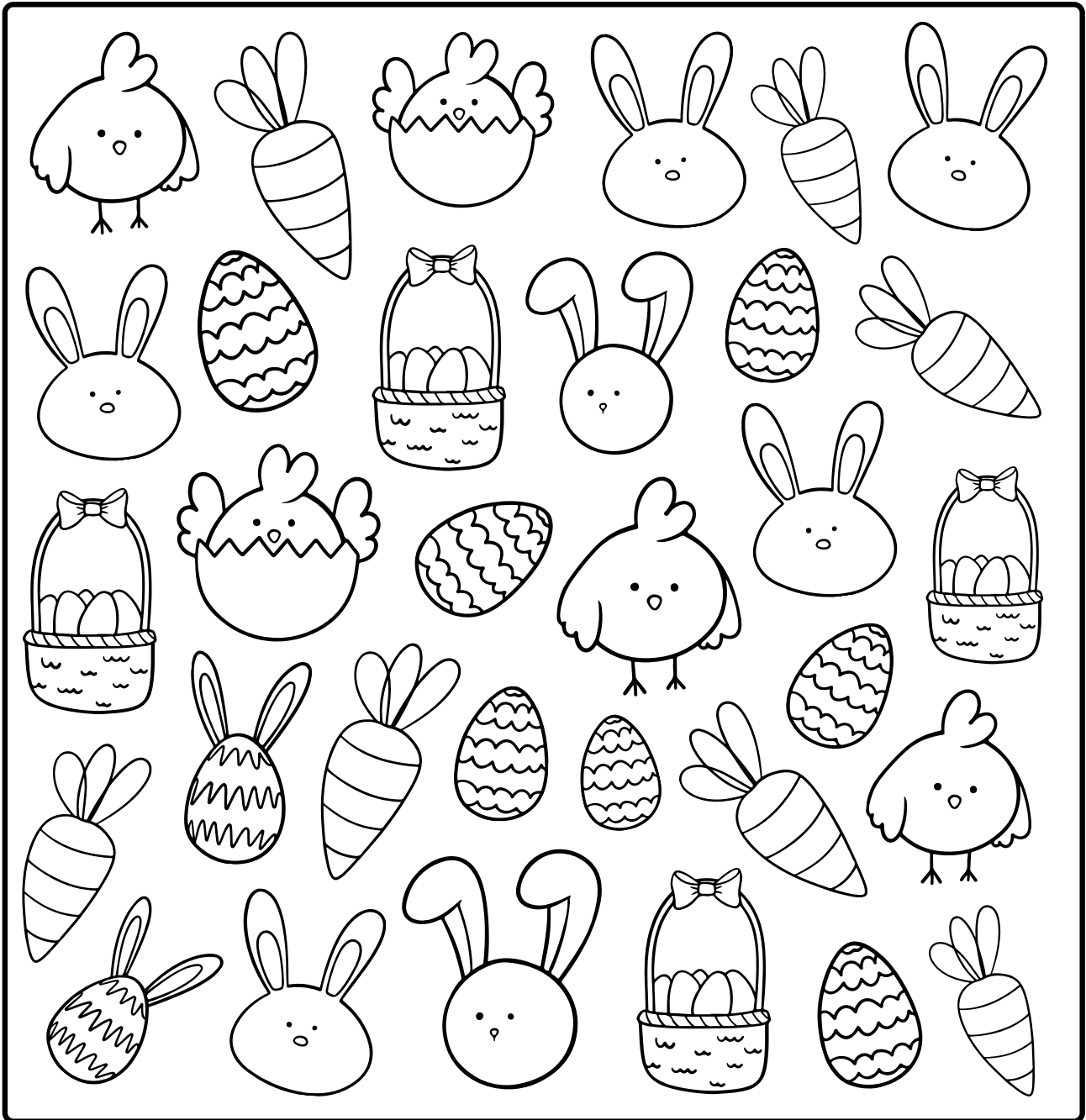
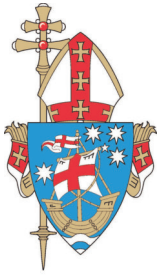


Easter Count And Colour



Colour, count and write the numbers in the boxes below





Easter Word Search



Can you find the words hidden in the word search puzzle?

T	O	E	G	G	B	R	P	B	H	D	C
R	X	E	F	I	R	I	T	U	K	E	H
A	A	R	L	D	B	N	T	N	A	N	O
D	E	C	O	R	A	T	E	N	S	T	C
I	A	E	W	I	S	E	R	Y	U	A	O
T	O	I	E	N	K	N	N	O	N	L	L
I	O	R	R	A	E	I	C	C	N	A	A
O	A	E	S	A	T	U	C	K	Y	M	T
N	O	S	E	S	P	R	I	N	G	B	E
N	P	A	T	T	E	R	N	C	H	K	O
S	F	L	O	S	S	L	O	V	E	A	L
E	A	S	T	E	R	H	O	E	N	E	D

EGG

LAMB

BUNNY

SUNNY

PATTERN

BASKET

EASTER

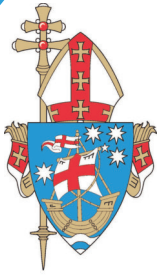
SPRING

TRADITION

DECORATE

FLOWERS

CHOCOLATE



Easter Word Search



ANSWER KEY



EGG

LAMB

BUNNY

SUNNY

PATTERN

BASKET

EASTER

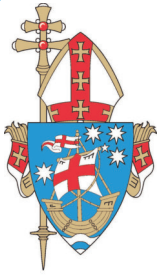
SPRING

TRADITION

DECORATE

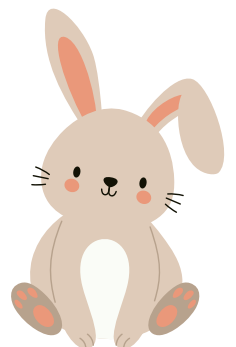
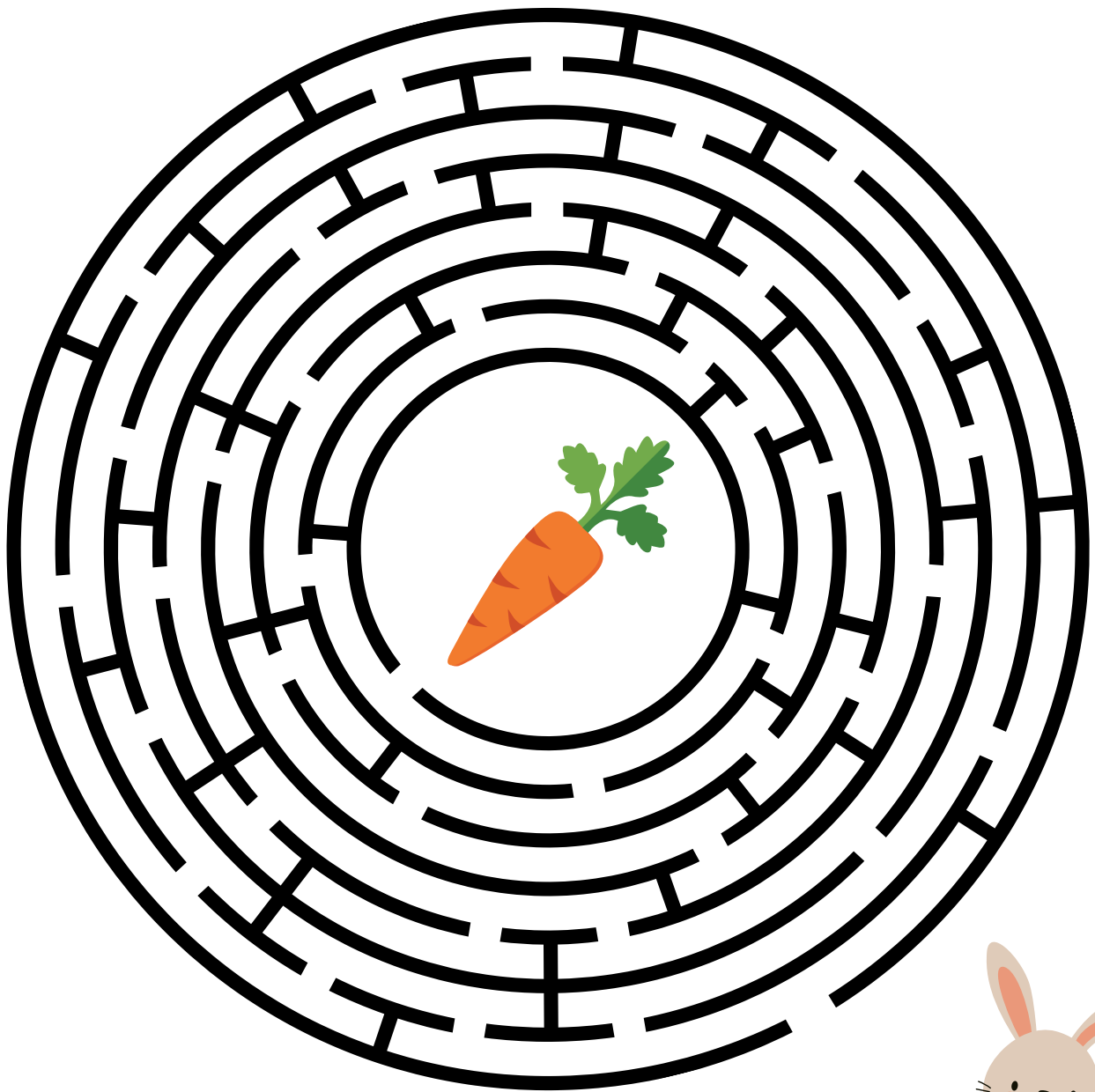
FLOWERS

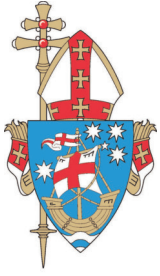
CHOCOLATE



Easter Maze Puzzle

Help the Easter bunny to find the way
through to his carrot.





These simple actions can help bring hope to others and spread kindness throughout your community this Easter



Visit Friends Who Might Be Alone for Easter

- Reach out to isolated community members or friends who may be spending Easter alone.

Make Easter Cards for Your Loved Ones

- Create handmade Easter cards for friends, family, and other special people in your life.
- Share the cards with people in your community, especially those who might not receive any.

Volunteer at a Shelter

- Many shelters, such as the Hutt Street Centre and St Vincent de Paul Society, welcome volunteers to help with:
 - Meal preparation and food service
 - Offering companionship to those in need
- Giving your time can make a lasting impact on those who are experiencing hardship this Easter.

Donate Food and Supplies

- Shelters and food banks are always in need of donations, including:
 1. Non-perishable food (canned goods, rice, pasta)
 2. Toiletries (soap, shampoo, toothpaste)
 3. Clothing (warm jackets, socks, or blankets)